

Ullman Sails Long Beach Race Week



Friday 26th to Sunday 28th June 2026
Alamitos Bay Yacht Club & Long Beach Yacht Club
Long Beach, California, USA

<http://www.lbrw.org>



SAILING INSTRUCTIONS

Change 1 – June 27, 20206

1. CHANGES TO SAILING INSTRUCTIONS

Any change to the sailing instructions will be posted before 1000 on the day it will take effect, except that any change to the schedule of races will be posted by 2000 on the day before it will take effect.

2. COMMUNICATIONS WITH COMPETITORS

- 2.1. As a courtesy, notices to competitors may be posted on the notice board located at LBYC on the glass sliding doors and windows of the Regatta Room which is located on the East face of the club, bottom floor overlooking the channel.
- 2.2. The race committee will use the following VHF Channels for communication:
Channel 68 – Alpha Course : Patience
Channel 69 – Charlie Course : Loynes

3. SIGNALS MADE ASHORE

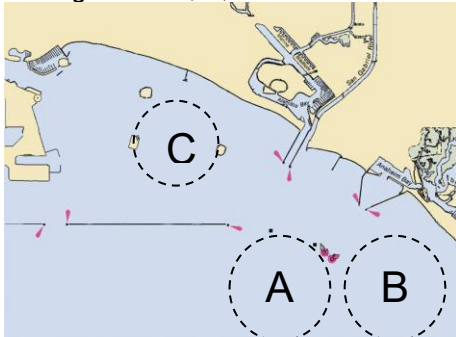
- 3.1. Signals made ashore will be displayed on the LBYC flagpole.
- 3.2. When flag AP is displayed ashore, '1 minute' is replaced with 'not less than 60 minutes' in race signal AP. Boats are requested not to leave the harbor until this signal is lowered.
- 3.3. The race committee will broadcast its intentions to the Racing Areas on the VHF Channels designated in SI 2.2 thirty minutes before the scheduled warning.

4. CLASS FLAGS

Class flag descriptions will be posted by 0900 on the day they will take effect.

5. RACING AREAS

- 5.1. Racing Areas A, B, and C are shown below.



- 5.2. Assignments of classes to Racing Areas will be posted by 0900 on the day they take effect.

6. COURSES

- 6.1. The course designation will be displayed on a placard from the race committee signal vessel.

Ullman Sails Long Beach Race Week

- 6.2. For **One-Design**, and **PHRF**, the diagrams in “Attachment A – Buoy Racing Courses” show the courses, including the course signals, approximate angles between legs, the order in which marks are to be passed, and the side on which each mark is to be left. The course lengths may be adjusted to achieve target times. (see SI 12.1)
- 6.3. No later than the warning signal, the race committee signal vessel will display the approximate compass bearing and distance to the first mark.
- 6.4. For the **Random Leg Fleet**, the diagrams in “Attachment B – Random Leg Courses” show the courses, including the course signals, the order in which marks are to be passed, and the side on which each mark is to be left.

7. MARKS

- 7.1. Alpha Course Patience
 - 7.1.1. Marks 1, 2, 3s and 3p are yellow inflatable shapes.
 - 7.1.2. New marks, as provided in instruction 10, are orange inflatable shapes.
 - 7.1.3. The starting mark is an orange inflatable shape.
 - 7.1.4. The finishing mark is an orange inflatable shape.
- 7.2. Charlie Course Loynes
 - 7.2.1. Marks 1, 2, 3s and 3p are orange inflatable shapes.
 - 7.2.2. New marks, as provided in instruction 10, are yellow inflatable shapes.
 - 7.2.3. The starting mark is a yellow inflatable shape.
 - 7.2.4. The finishing mark is a yellow inflatable shape.
- 7.3. For the **Random Leg Fleet** the marks listed in Attachment B when used in a course are rounding marks.
- 7.4. For the **Random Leg Fleet**, if a mark is missing and the race committee is unable to replace the mark in accordance with RRS 34, boats shall round the location of the mark as published in Attachment B of these sailing instructions. This modifies RRS 34.



8. OBSTRUCTIONS

- 8.1. [DP] If a vessel is moored or has an anchor down within 300 yards of Island White (Mark 7), then the vessel and the two lines that are tangent to it and to Island White (Mark 7) bound an area that is an obstruction. Boats shall not sail into that area.

9. THE START

- 9.1. To alert boats that a sequence of starts will begin soon, the orange starting line flag will be displayed with one sound at least four minutes before a warning signal is displayed.
- 9.2. The race committee may change the first leg of the course by laying a new mark and signaling all boats by displaying flag C with repetitive sound signals at or shortly following the warning signal. The original mark will be removed as soon as practicable. When in a subsequent change a new mark is replaced, it will be replaced by an original mark.
- 9.3. The starting line is between a staff displaying an orange flag on the signal vessel at the starboard end and the course side of the port-end starting mark.
- 9.4. Boats whose warning signal has not been made shall keep clear of the starting area.
- 9.5. A boat that does not start within 5 minutes after her starting signal will be scored Did Not Start without a hearing. This changes RRS A4 and A5.
- 9.6. As a courtesy, the race committee will notify recalled boats by hailing her sail number over the designated VHF channel. (see SI 2.2) Failure of the committee to make the attempt or for the competitor to hear the hail will not be grounds for redress. This changes RRS 62.1(a). For J70 and Melges 15 class, see Attachment C.
- 9.7. For the J70 and Melges 15 classes, Attachment C describes the starting sequence.
- 9.8. For the **Catalina 37 class only** competitors may be required to reduce sail. The combination to be used will be signaled from the race committee vessel with or before the warning signal. The signals will be as follows:

Ullman Sails Long Beach Race Week

Signal	Headsail	Spinnaker
 Flag J	Jib	Spinnaker
 Flag K	Jib	No Spinnaker

10. CHANGE OF THE NEXT LEG OF THE COURSE

- 10.1. Marks may be moved up to 10 degrees in bearing without a signal, provided the change is made prior to the lead boat beginning that leg of the course. This changes RRS 33.
- 10.2. To change the next leg of the course, the race committee will lay a new mark (or move the finishing line) and remove the original mark as soon as practicable. When in a subsequent change a new mark is replaced, it will be replaced by an original mark.

11. THE FINISH

- 11.1. The finishing line is between a staff displaying a blue flag on the signal vessel at the starboard end and the course side of the port-end finishing mark.
- 11.2. In the interest of starting another race in a timely fashion, the race committee may assign a finish position to the last finisher(s) in a class provided that the position(s) can be determined in a reasonable manner.

12. TIME LIMITS AND TARGET TIMES

- 12.1. The target time for **One-Design**, and **PHRF** races will be approximately 60 minutes. The target time for **Random Leg Fleet** races will be approximately 180 minutes.
- 12.2. **One-Design** boats failing to finish within 20 minutes after the first boat sails the course and finishes will be scored Did Not Finish without a hearing. This changes RRS 35, A4 and A5.

13. HEARING REQUESTS

- 13.1. Hearing request forms and Scoring Inquiry forms are available on-line <https://www.lbrw.org/race-info/>. Hearing requests shall be submitted within the protest time limit at: https://www.racingrulesofsailing.org/protests/new?event_id=15164
- 13.2. The protest time limit is (1) for *protests* about an incident observed in the racing area, one hour after the race committee signal vessel for that racing area has docked, or for other *protests*, one hour after the relevant information is available to the protestor.
- 13.3. Notices will be posted no later than 30 minutes after the protest time limit to inform competitors of hearings in which they are parties or named as witnesses. This will constitute notice to all parties under rule 63.1(a)(1).
- 13.4. A notice of boats scored per RRS A5.1 will be posted within the protest time limit.
- 13.5. Routine movement of the autonomous marks will not be considered an improper action of the race committee so shall not be grounds for redress. This includes minor readjustments or marks returning to station after being pushed away by a boat.

14. SAFETY REGULATIONS

- 14.1. [DP] A boat that retires from a race shall notify the race committee as soon as possible.

15. REPLACEMENT OF CREW OR EQUIPMENT

- 15.1. [DP] Entrants in classes that have an established crew weight limit and require weigh-ins must have their crews weighed-in by 1000 Friday, *June 26, 2026*.
- 15.2. [DP] In classes that require crew weigh-ins, entrants desiring to substitute crew must have substitute crew members weighed-in prior to 0900 on race day (Saturday and Sunday) at the race office located at LBYC. A crew substitution card, with the name of the substitute (who meets all requirements) and crew member replaced, must be submitted when being weighed-in and signed by a designated race committee official. Crew substitution cards are available at the race office.

Ullman Sails Long Beach Race Week

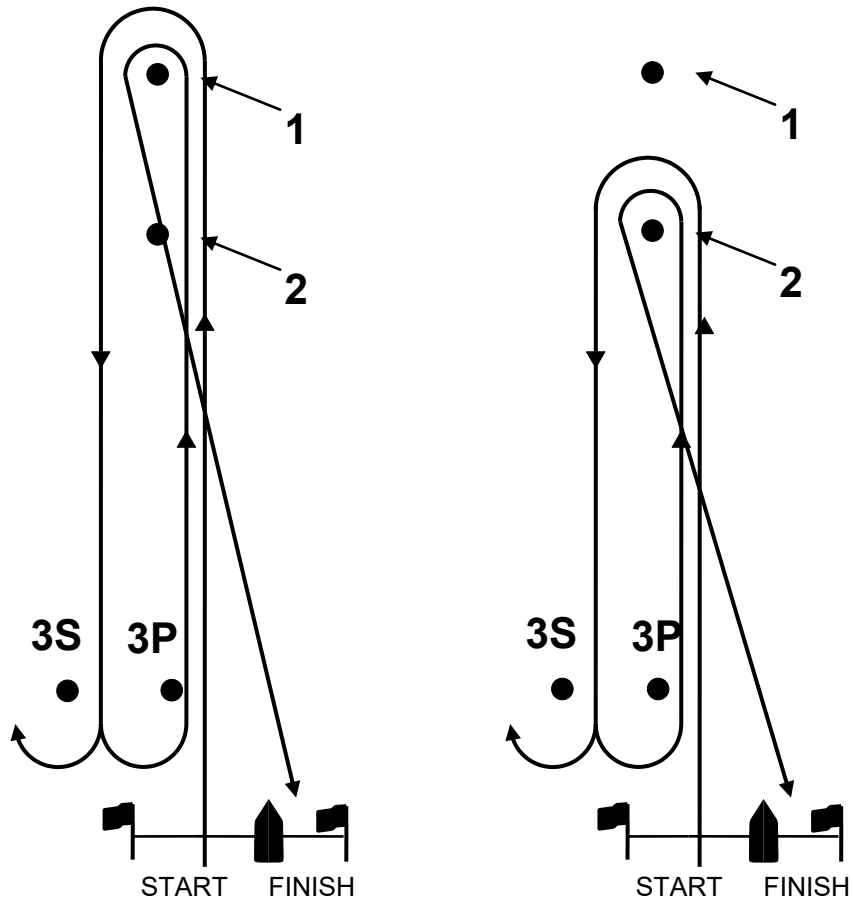
16. EVENT ADVERTISING

- 16.1. [DP] For boats of the Catalina 37 class, advertising may not be added to or removed from the hull, sails, or any equipment supplied with the boat from Long Beach Yacht Club Sailing Foundation.

Ullman Sails Long Beach Race Week

ATTACHMENT A – BUOY RACING COURSES

Windward-Leeward Course (Short and Long leg course examples)



Course #	Mark Rounding Order (marks 1 & 2 rounded to port, mark 3 is a gate)
1	(2 legs) Start – 1 – Finish
2	(4 legs) Start – 1 – 3s/3p – 1 – Finish
3	(6 legs) Start – 1 – 3s/3p – 1 – 3s/3p – 1 – Finish
4	(4 legs) Start – 1 – 3s/3p – 2 – Finish
5	(2 legs) Start – 2 – Finish
6	(4 legs) Start – 2 – 3s/3p – 2 – Finish
7	(6 legs) Start – 2 – 3s/3p – 2 – 3s/3p – 2 – Finish

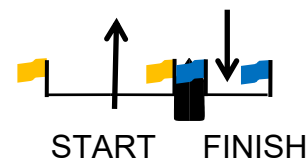
Ullman Sails Long Beach Race Week

ATTACHMENT B – RANDOM LEG COURSES

Course #	Distance	Mark Rounding Order
8	5.6	Start – 31 – 34 – 31 – Finish
9	6.0	Start – 13/19 – 10 – 31s – Finish
10	6.8	Start – 30 – 9 – 27 – 36 – Finish
11	8.1	Start – 13/19 – 21 – 13/19 – Finish
12	10.8	Start – 36 – 32 – 33 – 34 – 39 – 36
13	7.3	Start – 36 – 9 – 27 – 36 – Finish
14	8.4	Start – 13/19 – 10 – 30s – Finish
15	11.9	Start – 13/19 – 50/58 – 9 – 36 – Finish

Course #	Distance	Mark Rounding Order
A	10.5	Start – 13/19 – 10 – 34 – 27 – 30 – Finish
B	11.2	Start – 30 – 3 – 8 – 7 – 9s – 27 – 30 – Finish –
C	12.5	Start – 13/19 – 3 – 34 – 7 – 27 – 36 – Finish
D	12.8	Start – 82 – 30 – 34 – 9 – 30 – Finish
E	12.9	Start – 50/58 – 13/19 – 9 – 36 – Finish
F	13.5	Start – 82 – 1 – 37s – Finish
G	14.2	Start – 37s – 27 – 13/19 – 10 – 38s – 32 – 33 – 34 – 39 – 30 – Finish
H	15.0	Start – 55 – Finish
I	15.5	Start – 82 – 7s – 8 – 32 – 27 – 30 – Finish
J	16.6	Start – 30 – 32 – 27 – 30 – 8s – 32 – 39 – 36 – Finish
K	17.5	Start – 50/58 – 3 – 8 – 9 – 36 – Finish
L	17.5	Start – 13/19 – 3 – 32 – 34 – 7 – 27 – 36 – 10s – 13/19 – Finish
M	18.0	Start – 13/19 – 4 – 13/19 – Finish
N	18.8	Start – 13/19 – 3 – 32 – 34 – 7 – 27 – 36 – 8s – 10s – 13/19 – Finish
O	19.2	Start – 55 – 10 – 8 – 37s – Finish
P	19.8	Start – 21 <u>13/19</u> – 4 – 5 – 10 – 37s – Finish
Q	23.6	Start – 50/58 – 20 – 13/19 – Finish
R	24.0	Start – 50/58 – 4 – 13/19 – Finish
S	24.4	Start – 13/19 – 18 – 4 – 1 – 10 – 37s – Finish

- Random leg courses Start and Finish on racing area C and will be scored using the RLC rating.
- All marks rounded to port unless designated otherwise. The designation “s” after a mark designates a mark that shall be rounded to starboard.
- Mark 13/19 is Queen’s Gate and mark 50/58 is Angels Gate. A string representing a boat’s track must pass through the gate from the direction of the course from the previous mark



Start and Finish are as shown in the diagram opposite

Ullman Sails Long Beach Race Week

Schedule of Permanent Marks

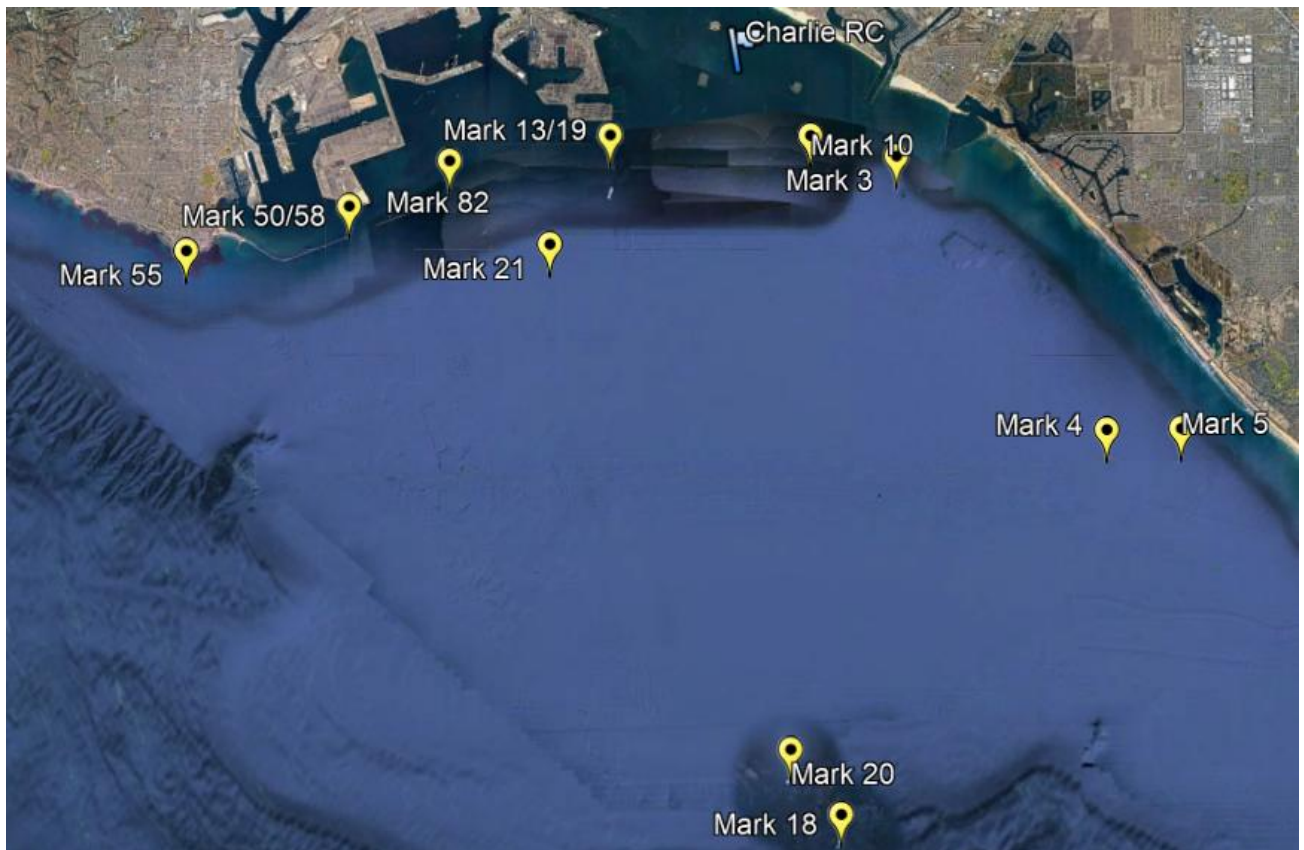
MARK	Mark Description	Latitude	Longitude
Start	Charlie Course Race Committee (Approx)	<u>33° 44.544'N</u>	<u>118° 9.121'W</u>
1	Anaheim Bay Channel Buoy - R "2" QR Whistle	33° 42.921'N	118° 6.557'W
3	Platform Esther	33° 43.118'N	118° 6.853'W
4	Platform Eva	33° 39.704'N	118° 3.723'W
5	Platform Emmy	33° 39.720'N	118° 2.610'W
7	Island White	33° 45.156'N	118° 9.596'W
8	Island Chaffee	33° 44.385'N	118° 8.346'W
9	Island Freeman	33° 44.473'N	118° 9.743'W
10	East End of Long Beach Breakwater	33° 43.376'N	118° 8.143'W
13	West End of Long Beach Breakwater "Queen's Gate"	33° 43.382'N	118° 11.148'W
16	Anaheim Bay Channel Buoy G "1" FL G 4 sec BELL	33° 43.007'N	118° 6.697'W
18	Platform Ellen & Elly	33° 34.950'N	118° 7.700'W
19	East End of Middle Breakwater "Queen's Gate"	33° 43.382'N	118° 11.148'W
20	Platform Edith	33° 35.750'N	118° 8.450'W
21	Scripps Waverider Buoy Y "215" FL (5) Y 20s	33° 42.017'N	118° 12.033'W
24	Anaheim Bay Channel Buoy CG"3"	33° 43.388'N	118° 6.379'W
27	R "2" Buoy near Pier J	33° 44.443'N	118° 10.633'W
50	West End of the Middle Breakwater - Angel's Gate	33° 42.490'N	118° 15.061'W
55	Point Fermin Whistle Buoy - R "6" FI R 4sec Whistle	33° 41.928'N	118° 17.500'W
58	East End of the San Pedro Breakwater Angel's Gate	33° 42.490'N	118° 15.061'W

Schedule of Semi-Permanent Marks

MARK	Mark Description	Latitude	Longitude
2	Ring Bouy	33° 43.120'N	118° 07.690'W
30	Ring Buoy 100 yards north of West Measured Mile Marker	33° 43.480'N	118° 09.930'W
31	Ring Buoy 100 yards north of East Measured Mile Marker	33° 43.470'N	118° 08.740'W
32	Ring Buoy 1/2 mile NW from the West End of the Alamitos Bay Jetty.	33° 44.470'N	118° 07.430'W
33	Ring Buoy 1 mile NW of West End of Alamitos Bay Jetty.	33° 44.910'N	118° 08.090'W
34	Ring Buoy 500 yards east from the end of Belmont Pier.	33° 45.260'N	118° 08.750'W
35	Ring Buoy 600 yards west from the end of Seal Beach Municipal Pier	33° 44.070'N	118° 06.800'W
36	Ring Buoy 1/2 mile west of the West Measured Mile Marker, and 100 yards north of the Breakwater	33° 43.510'N	118° 10.430'W
37	Ring Buoy 100 yards north of the « mile Measured Mile Marker, midway between Mark 31 and Mark 30.	33° 43.470'N	118° 09.340'W
38	Ring Buoy 400 yards SE from the south Marker Horn on Island Chaffee.	33° 44.160'N	118° 08.150'W
39	Ring Buoy 1/2 mile ENE of Island Grissom	33° 45.560'N	118° 10.32'W
40	Ring Buoy, 3/4 mile SW of Seal Beach Pier.	33° 43.220'N	118° 07.120'W
82	Ring Buoy 100 yards north of the Middle Breakwater, about half way between bend in Breakwater and Angel's Gate.	33° 43.060'N	118° 13.560'W

1. When passing or rounding oil platforms boats must stay outside the Exclusion Zone.
2. Mark locations vary slightly due to tide changes which affects swing.
3. Marks may not be on station for various reasons.
4. The Ring Buoys are Yellow.
5. Locations and distances, when given are approximate
6. Chart references: No's, 18746 & 18749

Ullman Sails Long Beach Race Week



Ullman Sails Long Beach Race Week

ATTACHMENT C – VAKAROS STARTING

SI 9 THE START (CONTINUED)

9.9 The race committee intends to use the Vakaros RaceSense system for all J70 and M15 race starts to signal the starting sequence and to identify and notify OCS boats via each boat's Vakaros unit. If the race committee determines that the system will not be used, they will display flag F prior to the warning signal (see SI 9.11 below).

9.10 Vakaros Starting System

- (a) RRS 26 (Starting Races) is changed to: "Races will be started by RaceSense. Times shall be taken from the timer display on a boat's Vakaros unit."

Minutes before starting signal	Visual signal on Vakaros Unit	Means
5	5:00	Warning Signal
4	4:00	Preparatory Signal
1	1:00	One minute
0	0:00	Starting Signal

- (b) The countdown to the start on the Atlas 2 or Atlas Edge from RaceSense will be the official time. Signal flags and any auditory signals from the race committee signal vessel will only be used for information purposes. This changes RRS 26.
- (c) Individual recalls will be made by the Vakaros RaceSense system. The race committee will not notify competitors who are on the course side of the starting line prior to the start via VHF. Notification will be via red lights and an "OCS" message on the Vakaros RaceSense device after the start. If a boat's device indicates that it is OCS, it must sail back below the line until the unit's light changes from red to green and displays "Cleared".
- (d) Race Signal "X" (Recall Signals; Individual Recall) is changed to the display of "OCS" and red lights on a boat's Vakaros unit.
- (e) RRS 29.1 (Recalls; Individual Recall) is replaced by: "When at a boat's starting signal any part of her hull is on the course side of the starting line or she must comply with rule 30.1, the race committee will promptly notify all such boats by displaying "OCS" and red lights on the boat's Vakaros unit. The notification shall be displayed until the hull of the boat has been completely on the pre-start side of the starting line or one of its extensions, and until the boat has complied with rule 30.1 if it applies, but no later than four minutes after the starting signal or one minute before any later starting signal, whichever is earlier. If rule 29.2, 30.3, or 30.4 applies this rule does not."

9.11 Flag F Starting System

- (a) The starting line will be between a staff displaying an orange flag on the signal vessel at its starboard end and the course side of the starting mark at its port end (See SI Attachment A).
- (a) If any part of a boat's hull is on the course side of the starting line at her starting signal and she is identified, the race committee will attempt to hail her sail number as provided in SI 2.2. RRS 29.1 will apply.